

SOLAR ELECTRIC PLUG-IN LSV

Improve Transportation Efficiency



Kudo X2

Utility Cart



Kudo SX6

Community Cart



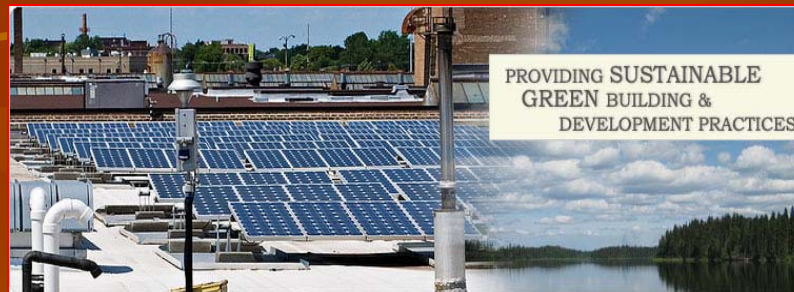
Kudo X8

Transport

SAVE MONEY, SAVE ENERGY, SAVE ENVIRONMENT AND ECOLOGY



Utility Truck



Custom Designed Filling Stations



Scout

Tel: 416-433-6622

Cruise Car Canada

mmcgroup@nuworldresearch.com

www.nuworldresearch.com



There are over 400
golf courses within
90 minutes of Toronto.
Click here to find one
that's close to you.

Improve Transportation Efficiency

Powering Transportation with Renewable Energy

Sustainable transportation will become an even more significant issue to reduce local pollution and emissions of greenhouse gases. KUDO a solar electric plug-in cart is ideally suited for environmentally sensitive areas such as Parks, Zoo, Resorts, planned communities, urban core commuters, university or corporate campuses, communities on islands, airports and hospitals.

Technology leaders will also have to deal with (1) potential government legislation to tax carbon emissions and (2) incentive-based schemes to achieve pollution control. In additions to evaluating various technologies, the incentive programs need to be evaluated at the same time to make good financial sense for a solar electric plug-in transportation solution.

Contact:

Ken Chester, President, Cruise Car Inc.

Madan M. Chawla, Cruise Car Canada



Kudo SX6



Kudo X8

Maximum speed of 25 mph. And can go for a distance of 25 miles to 40 miles subject to load and road conditions.